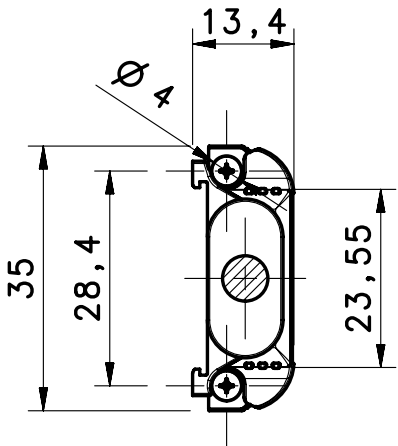
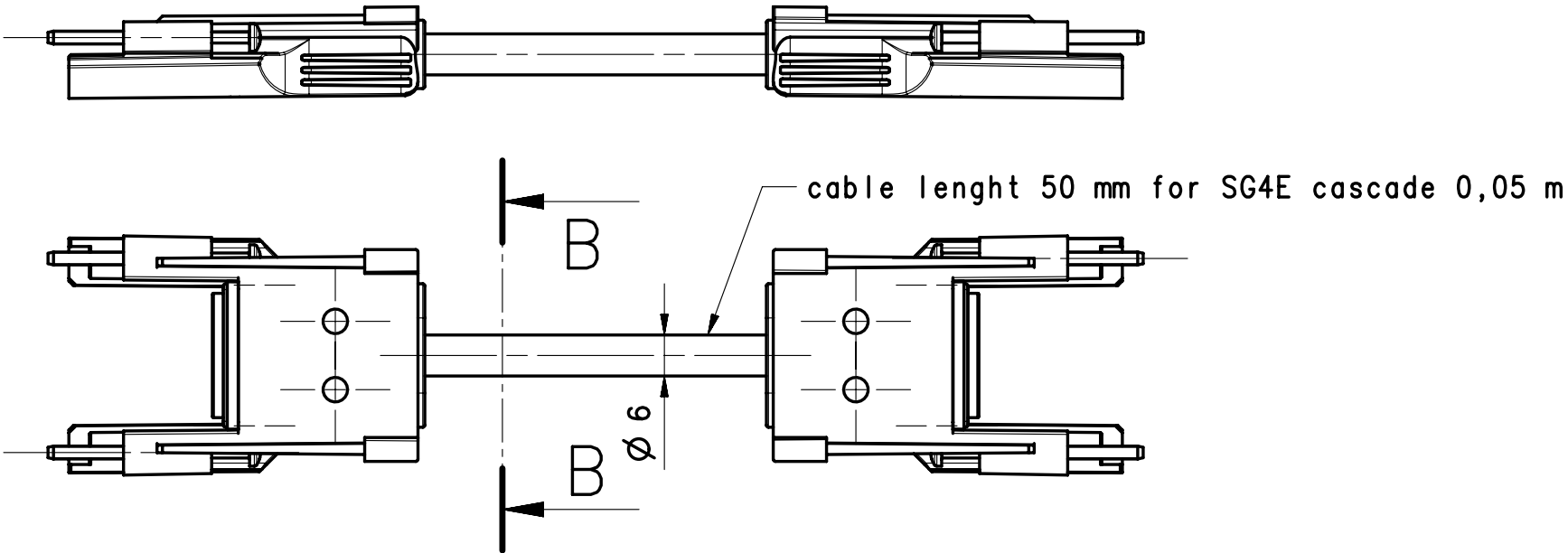
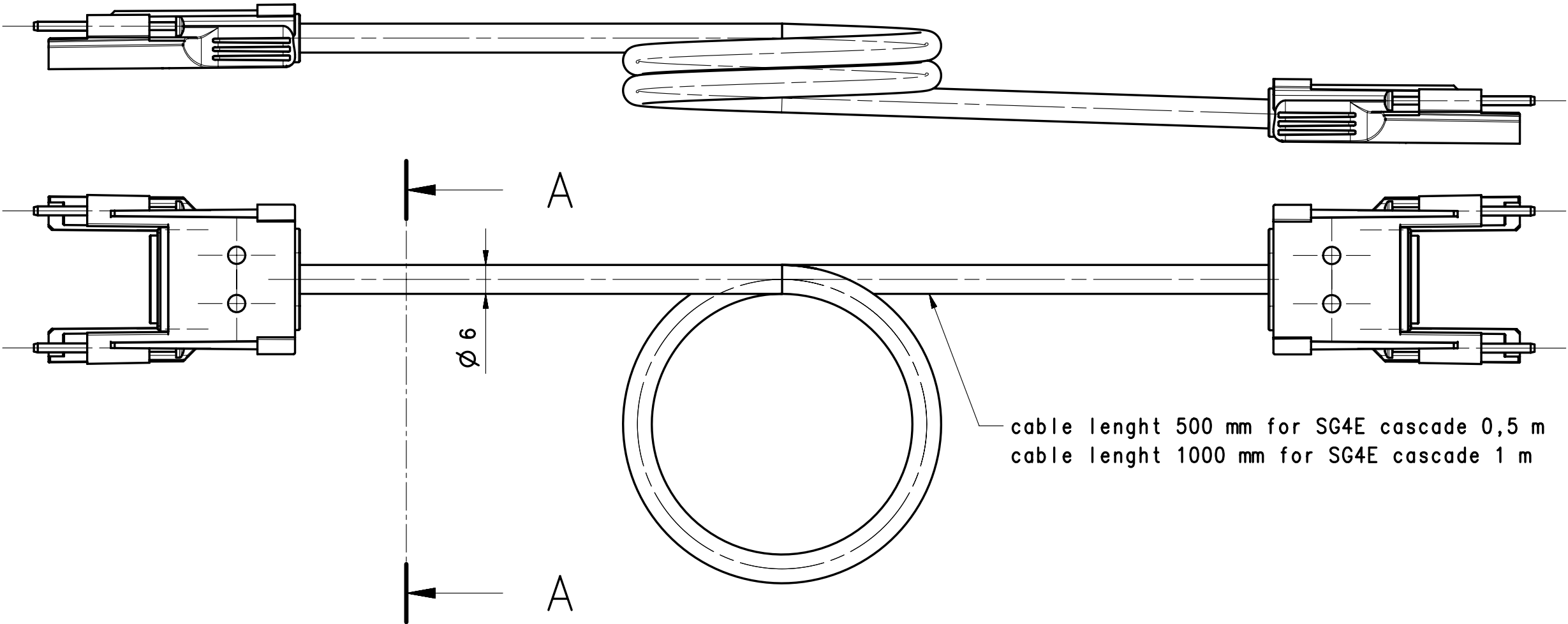
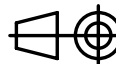



SECTION A-A



SECTION B-B



MOD.	REV.	PROPOSAL	DESCRIPTION.				DATE	SIGN		
All materials employed have to be selected among RoHS compliant materials: the EC directives to be referred to are 2002/95/EC and correlated subsequent ones.										
DIMENSIONS WITHOUT TOLERANCE DEGREE:  .. according to ISO 2768					NOTE					
PRECISION DEGREE	DIMENSIONAL GROUPS					TREAT.		SCALE  1 : 1		
	> 0 A 6	> 6 A 30	> 30 A 120	> 120 A 315	> 315 A 999	MATER.				
MEDIUM (m)	± 0,1	± 0,2	± 0,3	± 0,5	± 0,8	DES. BY L. Rossetti		DATE 12/10/2011	APPROV. .	
PRECISE (P)	± 0,05	± 0,1	± 0,15	± 0,2	± 0,3	NAME		MOLD N° .		
 www.datalogic.com					CVL-5193 - CVL-5194 - CVL-5195 SG4E cascade 1m - 0,5 m - 0,05 m		CODE			REV.
							PART N° DIM-0703			